



An ISO 9001 : 2000 Company



ISO 9001: 2000
Registered
C 0277 / 0212



QMS 004
A MEMBER
OF IAF MLA

Bag Lift / Manual Centrifuges

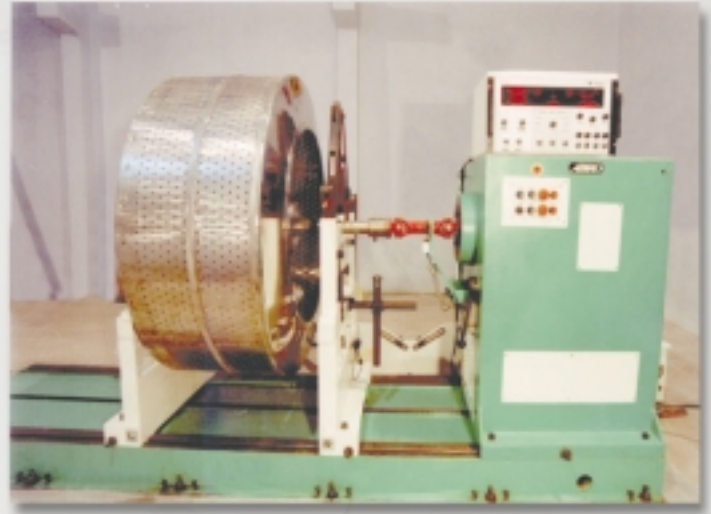


ACCURATE ENGINEERS

www.accurate-engineers.co.in



Our Factory Building



Bottom Discharge Centrifuge basket being dynamically balanced on our Computerised Dynamic Balancing Machine.

About Accurate Engineers

At Accurate Engineers, we design, develop, manufacture and market highly powerful and efficient Industrial Centrifuges, Fluid Bed Dryers, Fluid Bed Processors, which find applications in the field of chemical, pharmaceutical, medical and food processing industries for liquid solid separation.

We continually seek to expand our portfolio of Centrifuge Technology and develop products capable of remarkable performance in terms of efficiency, economical, power and finally ease of use - the critical attributes to serve our customers.

Strong Customer Relations

We have developed very strong relation ship with our customers by continuously meeting their need. Our objective is to provide them with the better products and better solutions that will make them more competitive and more successful in their marketing strategies.

Balanced Manufacturing Strategy

Our Strong execution is a balanced manufacturing strategy, relying on a healthy blend of internal and external capabilities and resources. Our Design, Testing and Assembly facilities allow us to meet the requisites at minimal capital cost.

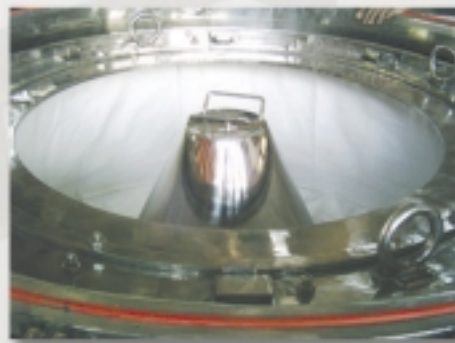
We also have a strong internal manufacturing capacity and workmanship allowing us to immerse new technologies and product development cycles and to serve the numerous requests from our customers for specialized production runs.

Experienced Management Team

Another critical factor in our execution is our Management Team. Each of our Partners have vast experience in the field of Engineering, Manufacturing and Marketing Industrial Centrifuges. We have been building this business together and share a depth of experience, ability and strong entrepreneurial sprit. Along with our experienced and dedicated employees, we are building Accurate Engineers as a successful company.



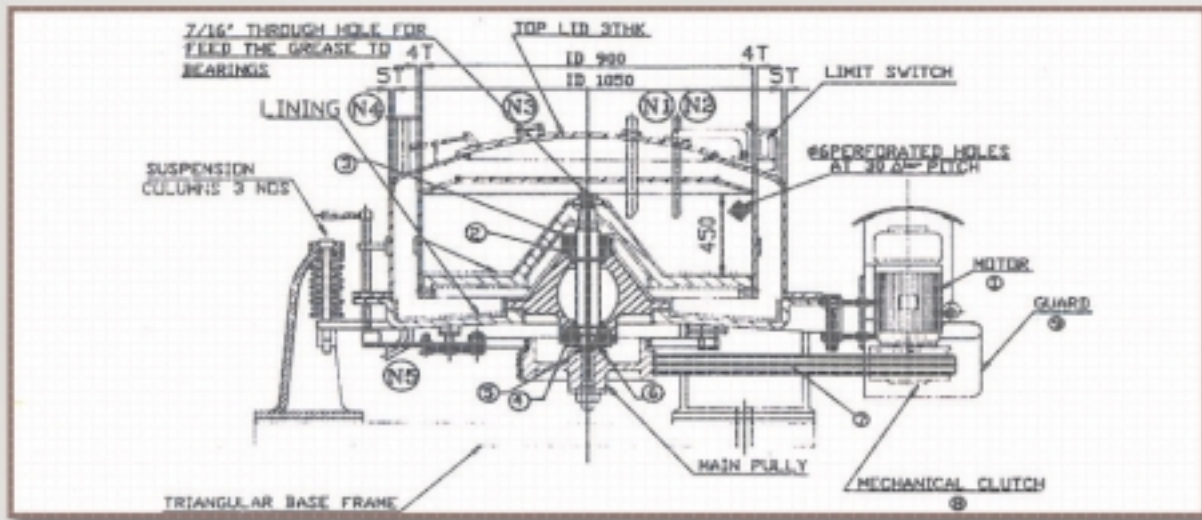
4 point bag lifting Centrifuge



4 point bag lifting Basket



4 point CGMP Centrifuge



Machine Base Drawing

Key features of Accurate Engineer's Machines

Accurate Engineer's bottom Discharge CENTRIFUGES are of the most modern design, of sturdy construction, provide rapid acceleration, with low current consumption and powerful efficient braking.

Basket: Rolled copper or stainless, mild or galvanized steel baskets are all-welded and amply drilled for speedy extraction. The basket is made to suit the product. The dynamically balanced basket ensures vibration less and silent working.

The Drive: It is furnished by a totally enclosed motor controlled by infinitely variable AC inverter drive to vary the basket speed with built-in dynamic braking system. The AC drive is incorporated with micro computer and has facility to interface with Programmable Logic Controller (PLC) or Distributed Control System (DCS) for complete automation.

Centrifugal Clutch / Hydraulic Coupling : This system will take care of over loading of ample capacity motor giving long, trouble free service

Scraping Arrangement: We offer three types of scraping systems:

- ✳ Manually operated scraper.
- ✳ Motorised single motion scraping system.
- ✳ Hydraulic dual motion scraping system.

Automation: The CENTRIFUGE can be made fully automatic with the help of AC inverter Variable Speed Drive, Programmable Logic Controller and Automated Valves.

Two Safety Devices: The limit switch automatically cuts of the power supply to the motor and the INTERLOCK prevents opening of the basket cover, until quite safe.

Warranty : One year unconditional guarantee for fault free material and workmanship.

Optional Accessories: ✳ Zero Speed Interlock ✳ Charge Regulator ✳ Cake Limiter ✳ Vibration Tripper ✳ Nitrogen Purging Control System.

Installation: Our expert engineers will supervise erection & commissioning of the CENTRIFUGE at your works, if required, at a reasonable service charge.



3 point CGMP Centrifuge



3 point CGMP Centrifuge



3 point GMP Centrifuge



TECHNICAL DATA OF THREE / FOUR POINT SUSPENSION BAG LIFT INSTANT TOP DISCHARGE CENTRIFUGES

PARAMETERS		AE 24 BL 3P/4P	AE 36 BL 3P/4P	AE 48 BL 3P/4P	AE 60 BL 3P/4P
Basket diameter	mm	600 / 600	900 / 900	1200 / 1200	1500 / 1500
Basket depth	mm	250 / 300	450 / 450	450 / 450	500 / 500
Working Capacity	Ltrs.	65 / 65	205 / 205	300 / 300	590 / 590
Basket Load revolutions	Kgs	81 / 81	256 / 256	375 / 375	738 / 737.5
Max. Basket revolutions	rpm	1200 / 1400	1000 / 1100	900 / 1000	800 / 900
Centrifugal Force	G	491 / 668	511 / 619	460 / 682	546 / 691
Filtration Area	m ²	0.58 / 0.58	1.29 / 1.29	1.72 / 1.72	2.36 / 2.36
Motor Power	HP	2.2 / 2.2	5.5 / 5.5	11.0 / 11.0	15 / 15
Overall Dimensions of the Machine					
Length over motor	mm	1650 / 1450	2250 / 1780	2500 / 2150	2800 / 2500
Width	mm	1650 / 1000	2250 / 1220	2500 / 1600	2800 / 3200
Operating Height	mm	1500 / 1800	2000 / 2400	2500 / 2900	2750 / 3200
Weight of the Machine	Kgs	950 / 1350	1800 / 3000	2800 / 4750	4000 / 6500

Advantages : * Easy and quick cake discharge. * Maximum use of Basket capacity. * Cake handing loss negligible. * Most suitable for Hard Cake. * Scraping of cake not required. * Uniform washing of cake. * Less manual labor involved. * Instant top discharge means the filter bag is lifted by lifting arrangement along with the top easy detachable ring and the cake is discharged through the centre of the bag.

TECHNICAL DATA OF THREE / FOUR SUSPENSION MANUAL TOP DISCHARGE CENTRIFUGES

PARAMETERS		AE 20 TD 3P/4P	AE 24 TD 3P/4P	AE 36 TD 3P/4P	AE 48 TD 3P/4P	AE 60 TD 3P/4P
Basket diameter	mm	508 / 508	610 / 610	915 / 915	1220 / 1220	1524 / 1524
Basket depth	mm	250 / 250	300 / 300	450 / 450	450 / 450	500 / 500
Working Capacity	Ltrs.	35 / 35	50 / 50	160 / 160	260 / 260	450 / 450
Basket Load revolutions	Kgs	44 / 44	63 / 63	200 / 200	325 / 325	563 / 563
Max. Basket revolutions	rpm	1400 / 1400	1200 / 1400	1000 / 1100	900 / 1000	800 / 900
Centrifugal Force	G	557 / 557	491 / 668	511 / 619	552 / 682	546 / 691
Filtration Area	m ²	0.4 / 0.4	0.59 / 0.59	1.29 / 1.29	2.49 / 2.49	2.39 / 2.39
Motor Power	HP	1.5 / 1.5	2.2 / 2.2	5.5 / 5.5	11 / 11	15 / 15
Overall Dimensions of the Machine						
Length over motor	mm	1200 / 1300	1500 / 1450	2100 / 1780	2350 / 2150	2650 / 2500
Width	mm	1200 / 900	1500 / 1000	2100 / 1220	2350 / 1600	2650 / 2000
Operating Height	mm	900 / 1100	900 / 1175	1200 / 1350	1300 / 1650	1300 / 2100
Weight of the Machine	Kgs	700 / 950	850 / 1150	1500 / 2750	2200 / 4000	3500 / 5500

Note: 1. Values indicated are approximate and may vary on actual machines. 2. The Centrifugal force relates to the basket diameter and maximum speed. 3. Basket load in kgs. will vary based on Bulk Density of the material. 4. We reserve the rights to alter the size, weight and design features. 5. Centrifuges available in other capacities also on request.



ACCURATE ENGINEERS

Office / Factory : Plot No. 9, Phase - 1, IDA Jeedimetla,
Hyderabad, A.P., India - 500 055.

Web Site : www.accurate-engineers.co.in

Telephone : +91-40-23191810

FAX : +91-40-23193639

Email : hyd2_rowland@sancharnet.in
info@accurate-engineers.co.in